

*epic*X



Power & Versatility  
in a Small, Portable Package

**BIOLASE**  
LEADER IN DENTAL LASERS™

# Better Versatility with Epic



## A WIDE VARIETY OF TIPS

The widest selection of tip lengths and diameters means the Epic offers more precise control of tissue cutting for different procedures and tissue biotypes.

EzTips® are bendable, for better access to all areas. These single-use tips enable quick, convenient treatment with less risk of cross contamination

Tips for the Epic diode are available online at [store.biolase.com](https://store.biolase.com).

## QUICK AND FRIENDLY TOOTH WHITENING

20-minute, full-mouth tooth whitening with the Epic Whitening Handpiece and LaserWhite 20 gel kit, with desensitizing gel.

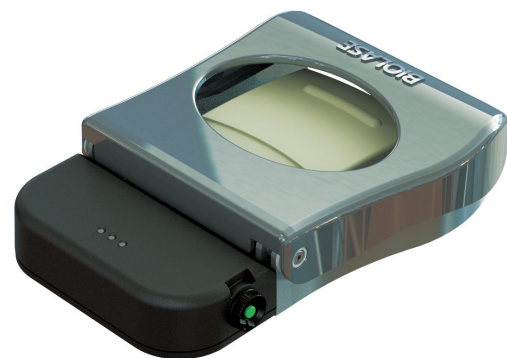


## FAST PAIN RELIEF FROM TMJ

The Deep Tissue Handpiece delivers quick, drug-free, pain therapy for the temporary relief of minor muscle and joint pain and stiffness.

## WIRELESS PORTABILITY

Wireless laser console & foot pedal with built-in replaceable lithium-ion battery for untethered portability.



## CONVENIENT PRESETS

15 presets put your most frequently performed procedures at your fingertips.

# Better Clinical Outcomes with Epic

Use your smart phone or tablet to scan the QR Code to watch Epic in action.



Laser Pocket Therapy



Gingival Troughing



Aphthous Ulcers



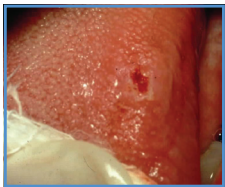
Frenectomy



Gingivectomy



Exposure of Unerupted Teeth



Excision for Biopsy



Soft-Tissue Crown Lengthening

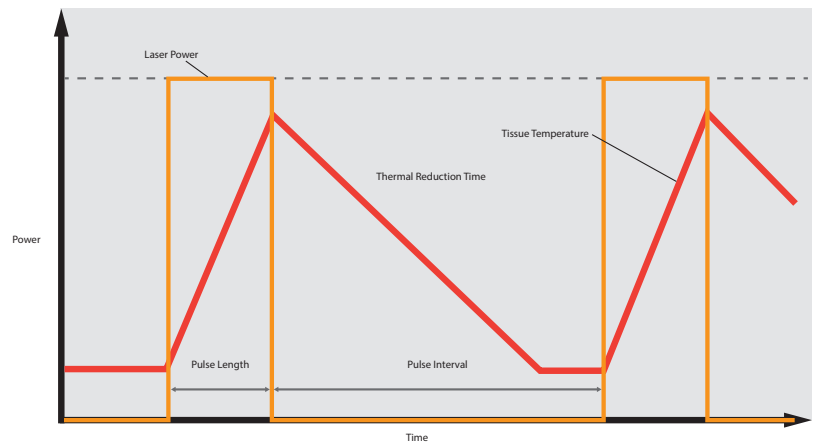


Implant Recovery

Visit [biolase.com](http://biolase.com) for additional clinical videos

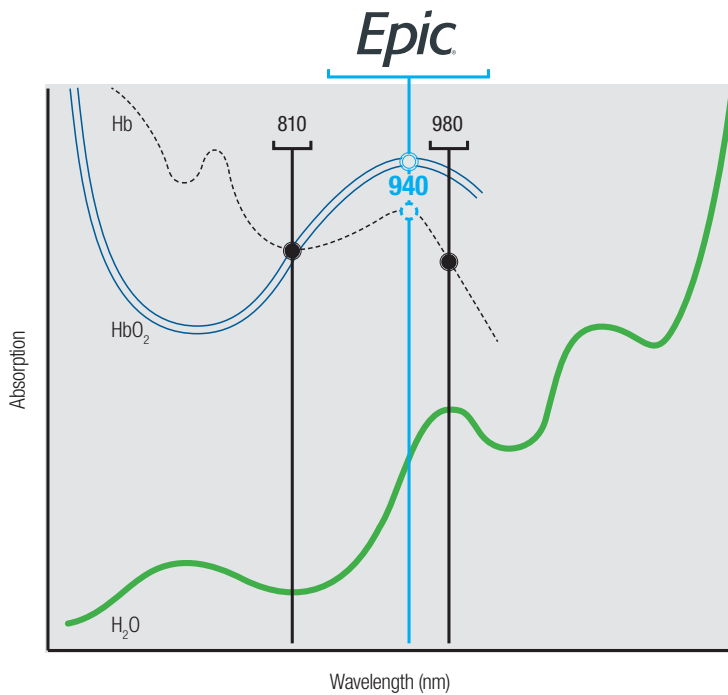
# Better Patient Experiences with Epic

The Epic 10 Soft-Tissue Laser System has one of the shortest pulses of any dental diode laser, as low as 10 microseconds on and 40 microseconds off for peak thermal relaxation. This provides cleaner cutting with minimum discomfort through its proprietary ComfortPulse pulse modulation.\* Epic 10 helps keep patients more comfortable by significantly reducing the amount of time the laser is actually cutting, to reduce sensitivity from heat buildup at the surgical site. This unique combination of features (wavelength and pulse modulation) means you can perform most soft-tissue procedures using topical anesthetic only.



\*Data on file.

# The Global Leaders in Dental Laser Solutions



## Fast Absorption in Target Tissue

Developed exclusively for dentistry by BIOLASE

Better absorbed by hemoglobin and oxyhemoglobin than other wavelengths (see graph)<sup>1</sup>

Cuts efficiently at lower power and with less heat<sup>2</sup>

<sup>1</sup> Jacques, Steven L. "Optical Properties of Biological Tissues: A Review." *Physics in Medicine and Biology* 58, no. 11 (2013): R37–61. <https://doi.org/10.1098/0031-9155/58/11/R37>.

<sup>2</sup> Tenore, Gianluca, Ahmed Mohsen, Alessandro Nuvoli, Gaspare Palaia, Federica Rocchetti, Cira Rosaria Tiziana Di Gioia, Andrea Cicconetti, Umberto Romeo, and Alessandro Del Vecchio. "The Impact of Laser Thermal Effect on Histological Evaluation of Oral Soft Tissue Biopsy: Systematic Review." *Dentistry Journal* 11, no. 2 (January 18, 2023): 28. <https://doi.org/10.3390/dj11020028>.

## Epic X Technical Specs

Laser Classification: IV (4)

Wavelength: 940 ± 10 nm

Max Output Power: 10 W

Pulse Repetition Rate: Up to 20 KHz (for reference)

Power Modes:

Continuous Wave (CW)

ComfortPulse 0: 10 µsec ON / 40 µsec OFF

ComfortPulse 1: 100 µsec ON / 200 µsec OFF

ComfortPulse 2: 1 msec ON / 1 msec OFF

Pulsed: 20 msec ON / 20 msec OFF

Aiming Beam: Laser diode, Max 5 mW,  
625nm – 670nm, Class 2

Standard Fiber Cable Length: 6' 7" (2.0 m)

Dimensions: 5.7 in (W) x 4.4 in (H) x 6.5 in (L)  
(14.5 cm x 11.2 cm x 16.5 cm)

Weight: 2.5lb (1 kg)


Nominal Ocular Hazard Distance: 8' 8" (2.71 m)



## NORTH AMERICA

 BIOLASE MG LLC  
27042 Towne Centre Drive, Suite 270  
Foothill Ranch, CA 92610 USA  
[biolase.com](http://biolase.com) + 833.BIOLASE

## EU REPRESENTATIVE

 MT Promedt Consulting GmbH  
Ernst-Heckel-Straße 7  
66386 St. Ingbert, Germany  
+49 6894 581020 + [mt-procons.com](http://mt-procons.com)

  
Rx Only  0482  
MCD-25-2710 Rev. A

**BIOLASE**  
LEADER IN DENTAL LASERS™

For more information, visit [biolase.com](http://biolase.com)   

©2024 BIOLASE MG LLC All rights reserved.