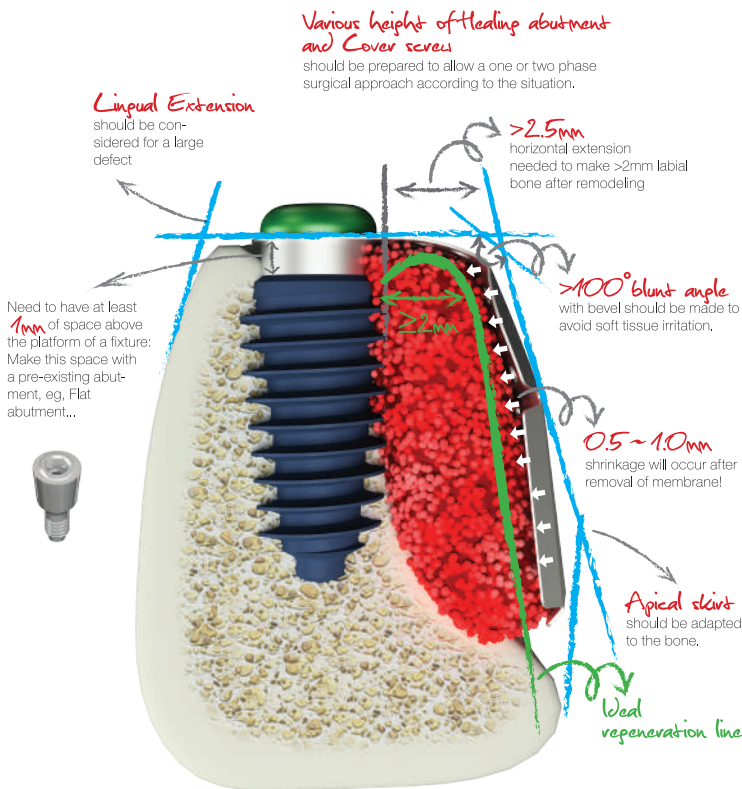
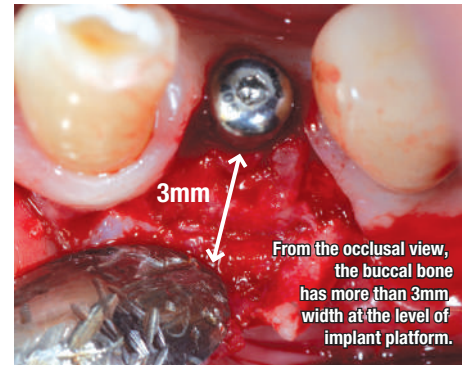


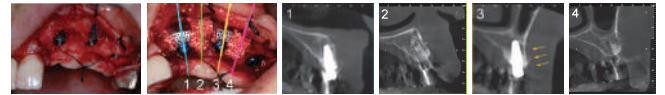
AnyRidge is Perfect for Ridge augmentation with i-Gen

Ideal regeneration starts from the 'Science for space management'.
i-Gen & AnyRidge can sure the ideal regeneration.



Go beyond the limits of Collagen Membrane.

Any location, Any Size & Any Situation for GBR, i-Gen ensures regenerating minimum **2.5mm buccal bone**.
The regenerating of more than 2.5mm of buccal bone to minimize bone loss after GBR and maximize the life of implant.



Pre-Shaped Design

To avoid the inconvenience of modeling titanium membrane in the clinic, i-Gen has 12 pre-formed sizes in varying shapes.



Superior initial stability makes a perfect match for GBR using i-Gen membrane

AnyRidge can be placed in any ridge thanks to its knife thread. AnyRidge Knife thread has perfect stability in Regenerated bone



Have you made the PARADIGM SHIFT yet? Do the AnyRidge Way

Excellent Primary stability with Knife thread

For smooth insertion and stronger primary stability.
No cutting edge for minimum invasion. Perfect result in any bone conditions.

Excellent Secondary stability with Xpeed

For faster, stronger osseointegration. Surface technology incorporating Ca²⁺ ions on the SLA treated surface. 100% acid-residue free surface

